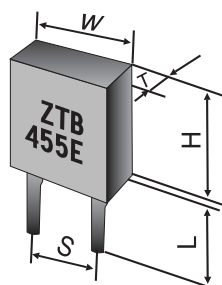


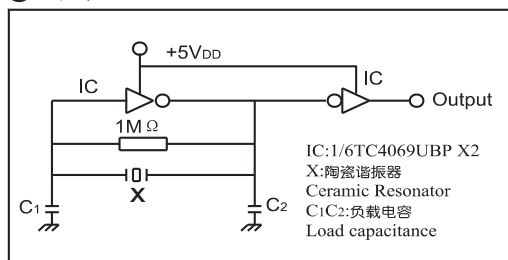
● 技术特性 TECHNICAL CHARACTERISTICS

| 型号 Part Number | 频率精度 Frequency Accuracy | 谐振阻抗 Resonant Impedance(Ω) | 温度稳定性 Stability in Temperature (-20~+80℃)(%) | 老化率(10年) Aging For ten years(%) | 负载电容 Load Capacitance (pF) | |
|-------------------|----------------------------|-------------------------------|---|------------------------------------|-------------------------------|-----|
| | | | | | C1 | C2 |
| ZTB190~249D | ±1KHz | ≤20 | ±0.3 | ±0.3 | 330 | 470 |
| ZTB250~374D | ±1KHz | ≤20 | ±0.3 | ±0.3 | 220 | 470 |
| ZTB375~429P | ±2KHz | ≤20 | ±0.3 | ±0.3 | 120 | 470 |
| ZTB430~509E | ±2KHz | ≤20 | ±0.3 | ±0.3 | 100 | 100 |
| ZTB510~699P | ±2KHz | ≤30 | ±0.3 | ±0.3 | 100 | 100 |
| ZTB700~999J | ±0.5% | ≤70 | ±0.3 | ±0.3 | 100 | 100 |
| ZTB1000~1250J | ±0.5% | ≤100 | ±0.3 | ±0.3 | 100 | 100 |

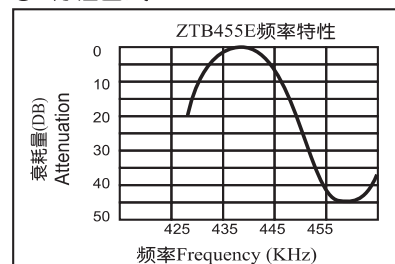


| 频率范围 (KHz) Frequency Range | 宽W(mm) Width | 厚T(mm) Thickness | 高H(mm) Height | 脚距S(mm) Lead Space | 引线长L(mm) Lead Length |
|-------------------------------|-----------------|---------------------|------------------|-----------------------|-------------------------|
| 190~249 | 13.5 | 3.8 | 14.7 | 10.0 | 8.0 |
| 250~374 | 11.0 | 3.8 | 12.2 | 7.7 | 7.0 |
| 375~400 | 7.9 | 3.6 | 9.3 | 5.0 | 7.7 |
| 401~699 | 7.0 | 3.5 | 9.0 | 5.0 | 4.0(6.0) |
| 700~1250 | 5.2 | 2.8 | 6.8 | 2.5 | 3.5(5.0) |
| 1000J | 5.1 | 2.3 | 6.3 | 2.5 | 4.0 |

● 测试电路TEST CIRCUIT



● 特性曲线CHARACTERISTICS



ZTB □ YKHZ 系列表面安装陶瓷谐振器

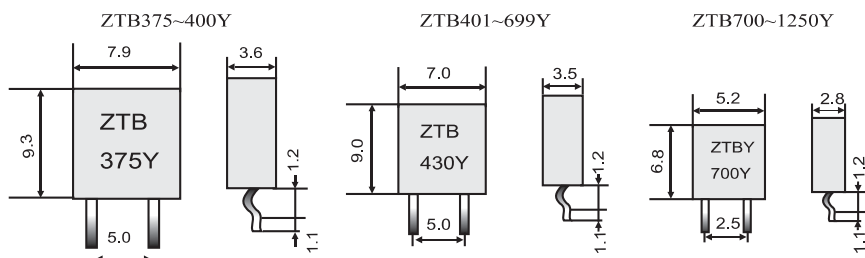
ZTB □ YKHZ SERIES SURFACE MOUNTABLE CERAMIC RESONATOR

375~1250KHZ

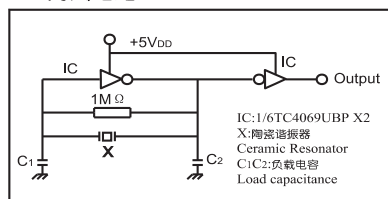
● 技术特性 TECHNICAL CHARACTERISTICS

| 型号 Part Number | 频率精度 Frequency Accuracy (%) | 谐振阻抗 Resonant Impedance(Ω) | 温度稳定性 Stability in Temperature (-20~+80℃)(%) | 老化率(10年) Aging For ten Years(%) | 负载电容 Load Capacitance(pF) | |
|-------------------|--------------------------------|-------------------------------|---|------------------------------------|------------------------------|-----|
| | | | | | C1 | C2 |
| ZTB375~429Y | ±0.5 | ≤20 | ±0.3 | ±0.3 | 120 | 470 |
| ZTB430~509Y | ±0.5 | ≤20 | ±0.3 | ±0.3 | 100 | 100 |
| ZTB510~699Y | ±0.5 | ≤30 | ±0.3 | ±0.3 | 100 | 100 |
| ZTB700~900Y | ±0.5 | ≤50 | ±0.3 | ±0.3 | 100 | 100 |
| ZTB901~1000Y | ±0.5 | ≤70 | ±0.3 | ±0.3 | 100 | 100 |
| ZTB1001~1250Y | ±0.5 | ≤100 | ±0.3 | ±0.3 | 100 | 100 |

● 尺寸 DIMENSIONS



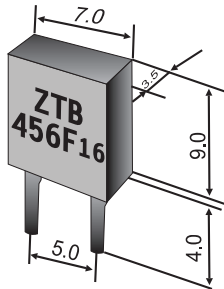
● 测试电路TEST CIRCUIT



**ZTB456F Series of Ceramic Resonator
For FM Multiplexers**

456KHZ

● 技术特性 TECHNICAL CHARACTERISTICS

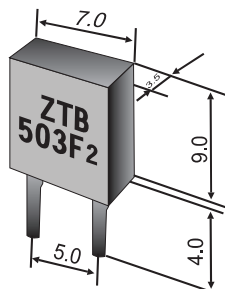


| 型号 Part Number | 频率精度 Frequency Accuracy | 适用的IC Applicable IC |
|-------------------|----------------------------|------------------------|
| ZTB456F11 | 19.000KHz±38Hz | LA3430 (SANYO) |
| ZTB456F14 | 19.000KHz±38Hz | TA7413AP (TOSHIBA) |
| ZTB456F15 | 456KHz±2KHz | LA1832 (SANYO) |
| ZTB456F16 | 19.000KHz±38Hz | TA8122AN (TOSHIBA) |
| ZTB456F18 | 19.000KHz±38Hz | TA8132N (TOSHIBA) |
| ZTB456F33 | 456KHz±2KHz | LA2232 (SANYO) |

电视机行信号合成电路用 ZTB503/500F 系列压控陶瓷谐振器
**ZTB503/500F SERIES OF CERAMIC RESONATOR
FOR TV HORIZONTAL SYNTHESIZER CIRCUITS**

503/500KHZ

● 技术特性 TECHNICAL CHARACTERISTICS



| 型号 Part Number | 频率精度 Frequency Accuracy | 适用的IC Applicable IC |
|-------------------|----------------------------|------------------------|
| ZTB503F2 | 503.5±2kHz | UPC1401(NEC) |
| ZTB503F5 | 504.5±2kHz | LA7620(SANYO) |
| ZTB503F6 | 519±2kHz | M51307(MITSUBISHI) |
| ZTB503F10 | 15.734kHz±0.5% | TA7777P(TOSHIBA) |
| ZTB503F12 | 503.5kHz±2kHz | TDA3586(THOMSON) |
| ZTB503F15 | 505.1kHz±2kHz | LA7650(SANYO) |
| ZTB503F30 | 503.5kHz±1.5kHz | TA8654AN(TOSHIBA) |
| ZTB503F38 | 15.734kHz±62kHz | AN5302(MATSUSHITA) |
| ZTB500F2 | 500.0kHz±2kHz | UPC1401(NEC) |
| ZTB500F9 | 500.0kHz±2kHz | M51308SP(MITSUBISHI) |
| ZTB500F13 | 500.0kHz±2kHz | M51367SP(MITSUBISHI) |
| ZTB500F28 | 15.680KHz±0.4% | LA7680(SANYO) |
| ZTB500F40 | 15.680KHz±0.4% | TA8691N(TOSHIBA) |
| ZTB500F55 | 15.680KHz±0.4% | LA7685(SANYO) |