

T CORE

TYPE	FIG.	Dimensions(mm)		
		A	B	C
T4/2/1	1	4.0±0.3	2.0±0.3	1.0±0.3
T4/2/2	1	4.0±0.3	2.0±0.3	2.0±0.3
T6/3/3	1	6.0±0.3	3.0±0.3	3.0±0.3
T8/4/4	1	8.0±0.3	4.0±0.3	4.0±0.3
T8/5/3	1	8.0±0.3	5.0±0.3	3.0±0.2
T9/5/3	1	9.0±0.3	5.0±0.3	3.0±0.2
T10/5/5	1	10.0±0.3	5.0±0.3	5.0±0.3
T10/6/2.8	1	10.0±0.3	6.0±0.3	2.8±0.2
T10/6/3.5	1	10.0±0.3	6.0±0.3	3.5±0.2
T10/6/4	1	10.0±0.3	6.0±0.3	4.0±0.2
T10/6/5	1	10.0±0.3	6.0±0.3	5.0±0.3
T12/6/4	1	12.0±0.4	6.0±0.3	4.0±0.3
T12.7/7.9/6.35	1	12.7±0.4	7.92±0.3	6.35±0.3
T13/6/7	1	13.0±0.4	6.0±0.3	7.0±0.3
T13/7/5	1	13.0±0.4	7.0±0.3	5.0±0.3
T14/8/7	1	14.0±0.4	8.0±0.3	7.0±0.3
T14/9/5	1	14.0±0.4	9.0±0.3	5.0±0.3
T14.6/10.5/3.7	1	14.6±0.3	10.5±0.3	3.7±0.3
T16/8/5	1	16.0±0.3	8.0±0.3	5.0±0.3
T16/9/5	1	16.0±0.3	9.0±0.3	5.0±0.3
T16/10/7	1	16.0±0.4	10.0±0.3	7.0±0.3
T16/12/8	1	16.0±0.3	12.0±0.3	8.0±0.3
T18/10/6.35	1	18.0±0.4	10.0±0.3	6.35±0.3
T18/10/10	1	18.0±0.4	10.0±0.3	10.0±0.3
T19/11/10	1	19.0±0.4	11.0±0.3	10.0±0.3
T19/13/11	1	19.0±0.4	13.0±0.3	11.0±0.3
T20/10/7	1	20.0±0.4	10.0±0.3	7.0±0.3
T20/10/10	1	20.0±0.4	10.0±0.3	10.0±0.3
T20/12/10	1	20.0±0.4	12.0±0.4	10.0±0.3
T22/14/6.35	1	22.0±0.6	14.0±0.6	6.35±0.3
T22/14/8	1	22.0±0.4	14.0±0.4	8.0±0.3
T22/14/10	1	22.0±0.4	14.0±0.4	10.0±0.3

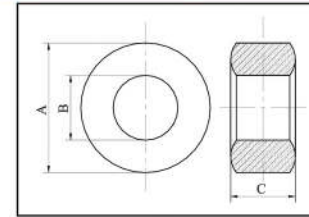
T CORE

FIG.1

Cl (mm ²)	Ae (mm ²)	Le (mm)	Ve (mm ³)	AL ± 30% (nH/N ²)				Weight g/PCS
				FW40	FWSK	FW7K	FW10K	
9.06	0.96	8.71	8.4	320				0.06
4.53	1.92	8.71	16.7	630	1500	2050	2750	0.10
3.02	4.32	13.07	56.5	1000	2250	3150	4200	0.32
2.27	7.69	17.42	133.9	1300	3050	4150	5550	0.75
4.53	4.50	20.41	91.85	640	1500	1950	2770	0.45
3.66	6.00	22.00	132	850	1900	2600	3500	0.60
1.88	12.50	23.50	294	1530	3600	4660	6660	1.40
4.48	5.60	25.12	141	650	1550	1960	2800	0.60
3.59	7.00	25.12	175.84	800	1930	2450	3500	0.73
3.14	8.00	25.12	200	920	2200	2800	4000	0.90
2.51	10.00	25.12	251.2	1200	2800	3800	5100	1.00
2.35	12.00	28.26	339	1220	2900	3800	5100	1.60
2.13	15.17	31.20	491	1440	3300	4500	6000	2.30
1.21	24.50	29.83	730	2400	5700	7250	10300	3.60
2.09	15.00	31.40	471	1380	3300	4200	6000	2.30
1.64	21.00	34.54	725	1760	3900	5460	7000	3.40
2.89	12.50	36.10	452	1060	2400	3300	4400	2.10
5.19	7.58	39.41	298	550	1330	1700	2400	1.50
1.88	20.00	37.68	754	1660	3800	5200	6900	3.50
2.24	17.50	39.25	686.87	1290	2800	3920	5600	3.20
1.94	21.00	40.82	857.22	1480	3230	4523	6450	4.10
2.75	16.00	43.96	703	1100	2500	3500	4600	3.40
1.73	25.40	43.96	1116.58	1800	4100	5600	7500	5.30
1.1	40.00	43.96	1758.4	2800	6500	8800	11800	8.30
1.18	40.00	47.10	1884	2450	5860	7460	10660	9.10
1.52	33.00	50.24	1657.92	1900	4550	5800	8300	7.98
1.34	35.00	47.10	1648.5	2150	5150	6550	9340	8.00
0.942	50.00	47.10	2355	3300	6930	9200	13860	11.50
1.25	40.00	50.24	2009	2300	5500	7000	10000	9.80
2.32	23.60	54.71	1290	1200	3150	4300	5700	6.60
1.76	32.00	56.52	1808.64	1700	4000	5000	7200	8.80
1.41	40.00	56.52	2260.8	2100	5000	6300	9000	10.50

T CORE

TYPE	FIG.	Dimensions(mm)		
		A	B	C
T22/14/12.7	1	22.0±0.4	14.0±0.4	12.7±0.3
T25/15/10	1	25.0±0.4	15.0±0.4	10.0±0.3
T25/15/12	1	25.0±0.4	15.0±0.4	12.0±0.3
T25/15/13	1	25.0±0.4	15.0±0.4	13.0±0.3
T25/15/15	1	25.0±0.6	15.0±0.6	15.0±0.4
T26/14.5/20	1	26.0±0.5	14.5±0.4	20.0±0.4
T28/12.4/7.6	1	28.0±0.4	12.4±0.3	7.6±0.3
T28/16/16	1	28.0±0.4	16.0±0.4	16.0±0.3
T28/18/13	1	28.0±0.4	18.0±0.4	13.0±0.3
T29/18/15	1	29.0±0.5	18.0±0.4	15.0±0.3
T29/19/15	1	29.0±0.5	19.0±0.4	15.0±0.3
T31/19/13	1	31.0±0.5	19.0±0.5	13.0±0.4
T31/19/15	1	31.0±0.5	19.0±0.5	15.0±0.4
T31/20/15	1	31.0±0.5	20.0±0.4	15.0±0.4
T34/21.8/21	1	34.0±0.6	21.8±0.6	21.0±0.4
T36/23/15	1	36.0±0.5	23.0±0.5	15.0±0.4
T38/19/13	1	38.0±0.5	19.0±0.5	13.0±0.4
T38/23/15	1	37.0±0.5	23.0±0.5	15.0±0.4
T38/19/15	1	38.0±0.5	19.0±0.5	15.0±0.4
T38/19/21	1	38.0±0.5	19.0±0.5	21.0±0.4
T38/20.5/15	1	38.0±0.5	20.5±0.5	15.0±0.4
T38/22/15	1	38.0±0.5	22.0±0.5	15.0±0.4
T38/25/15	1	38.0±0.5	25.0±0.5	15.0±0.4
T40/23/20	1	40.0±0.8	23.0±0.6	20.0±0.5
T40/25/20	1	40.0±0.8	25.0±0.6	20.0±0.5
T42/26/18	1	42.0±0.8	26.0±0.6	18.0±0.6
T45/26/12	1	45.0±0.5	26.0±0.3	12.0±0.3
T45/30/15	1	45.0±0.8	30.0±0.6	15.0±0.4
T47/27/15	1	47.0±0.8	27.0±0.6	15.0±0.4
T48/30/10	1	48.0±1.0	30.0±0.5	10.0±0.3
T48/30/15	1	48.0±1.0	30.0±0.5	15.0±0.4
T49/31/15	1	49.0±0.6	31.0±0.6	15.0±0.4

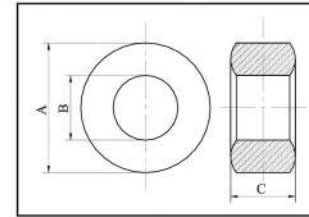
T CORE

FIG.1

Cl (mm ²)	Ae (mm ²)	Le (mm)	Ve (mm ³)	AL ± 30% (nH/N ²)				Weight g/PCS
				FW40	FWSK	FW7K	FW10K	
1.11	50.80	56.52	2871	3000	7800	9200	11500	13.60
1.25	50.00	62.80	3140	2200	5400	7500	9200	14.80
1.04	60.00	62.80	3768	2900	6700	9200	12000	17.50
0.96	65.00	62.80	4082	3200	7300	10000	13300	19.00
0.82	73.39	60.18	4416.6	3500	8400	11500	15300	23.00
0.55	115.00	63.58	7312.2	5250	11700	16300	23000	33.00
1.21	24.50	29.83	730	2400	5400	7250	10300	23.00
0.72	96.00	69.08	6631.68	4600	8950	12500	17900	31.00
1.11	65.00	72.22	4694.3	3000	5500	7600	11000	23.00
0.89	82.50	73.79	6087	3200	7700	9800	14000	29.00
1.00	75.00	75.36	5652	2870	6800	9000	12000	27.20
1.00	78.00	78.50	6123	2800	7000	8800	12700	29.50
0.87	90.00	78.50	7065	3700	7800	11200	13600	34.00
0.97	82.50	80.07	6605.7	3000	5900	9000	12000	31.70
0.68	128.10	87.60	11222	4230	10100	12850	18360	55.00
0.95	97.50	92.63	9032	3200	7400	9300	13500	44.00
0.722	123.50	89.49	11052	4000	9500	12100	17300	52.50
0.89	105.00	94.20	9891	3220	7700	9800	14000	48.50
0.628	142.50	89.49	12752	4600	11000	14000	20000	60.00
0.448	199.50	89.49	17853	6440	15400	19600	28000	85.00
0.7	131.00	91.80	12054	4140	9900	12600	18000	58.00
0.785	120.00	94.20	11304	3680	8800	11200	16000	55.00
1.01	97.50	98.90	9643	2850	6800	8666	12380	46.30
0.581	170.00	98.90	16814.7	5000	11800	15100	21500	81.00
0.68	150.00	102.00	15307	4240	10150	12920	18450	73.50
0.741	144.00	106.76	15373	3896	9317	11858	16941	74.00
0.978	114.00	111.00	12707	2568	6428	8285	12585	61.00
1.046	112.50	117.75	13246.8	2760	6600	8400	12000	64.00
0.77	150.00	116.18	17427	3730	8900	11350	16210	84.00
1.36	90.00	122.46	11021	2130	5070	6500	9230	55.00
0.91	135.00	122.46	16532	3400	7800	10600	14000	79.00
0.93	135.00	125.60	16696	3100	7430	9500	13500	81.00

T CORE

TYPE	FIG.	Dimensions(mm)		
		A	B	C
T49/31/19	1	49.0±0.6	31.0±0.6	18.8±0.3
T49/31.8/19	1	49.0±0.6	31.8±0.6	18.8±0.3
T49/33.8/19	1	49.0±0.6	33.8±0.6	18.8±0.3
T50/25/20	1	50.0±1.0	25.0±0.6	20.0±0.6
T51/31/13	1	51.0±1.0	31.0±0.8	13.0±0.4
T56/32/18	1	56.0±1.0	32.0±1.0	18.0±0.6
T56/36/20	1	56.0±1.0	36.0±1.0	20.0±0.6
T58/40/18	1	58.0±1.5	40.0±1.0	18.0±0.6
T60/38/20	1	60.0±1.5	38.0±1.0	20.0±0.6
T60/40/20	1	60.0±1.5	40.0±1.0	20.0±0.6
T63/38/12.7	1	63.0±1.0	38.0±1.0	12.7±0.5
T63/38/25	1	63.0±1.5	38.0±1.0	25.0±0.8
T68/44/15	1	68.0±1.5	44.0±0.8	15.0±0.8
T74/40/13	1	74.0±1.5	40.0±1.0	13.0±0.4
T80/50/20	1	80.0±1.5	50.0±1.0	20.0±0.8
T87/54/14	1	87.0±2.0	54.0±2.0	14.0±0.5
T87/54/30	1	87.0±2.0	54.0±2.0	30.0±1.0
T89/60/20	1	89.0±0.7	60.0±0.5	20.0±0.5
T100/50/20	1	100.0±1.2	50.0±0.9	20.0±0.4
T102/55/15	1	102.0±1.5	55.0±0.7	15.0±0.3
T102/55/20	1	102.0±1.5	55.0±0.8	20.0±0.5
T102/66/15	1	102.0±2.0	66.0±2.0	15.0±0.6
T102/65/20	1	102.0±1.5	65.0±0.8	20.0±0.5
T124/60/40	1	124.0±2.5	60.0±1.5	40.0±0.5
T132/100/27	1	132.0±3.0	100.0±2.5	27.0±0.5
T140/65/20	1	140.0±3.0	65.0±1.0	20.0±0.5
T150/110/27	1	150.0±3.0	110.0±3.0	27.0±0.5
T154/80/45	1	154.0±2.5	80.0±1.5	45.0±0.5

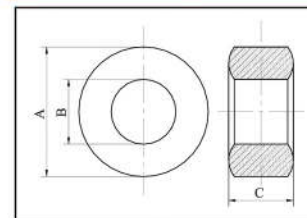
T CORE

FIG.1

Cl (mm ²)	Ae (mm ²)	Le (mm)	Ve (mm ³)	AL ± 30% (nH/N ²)				Weight g/PCS
				FW40	FWSK	FW7K	FW10K	
0.735	171.00	125.60	21477	3950	7800	11900	17100	96.00
0.77	163.40	126.80	20728	3950	7800	11900	17100	96.00
0.9	144.40	130.00	18771	3200	7670	9765	13950	90.00
0.471	250.00	117.75	29437.5	6133	14666	18666	26666	141.30
0.99	130.00	128.74	16736	2900	6900	9000	12600	83.00
0.639	216.00	138.16	29842	4500	10800	13500	19600	143.00
0.575	240.00	138.16	33158.4	2300	9500	12100	17300	136.00
1.0	144.00	150.70	21703	3050	7200	9250	13200	120.00
0.7	220.00	153.80	33849	4130	9870	12560	17950	162.00
0.785	200.00	157.00	31400	3680	8800	11200	16000	150.00
0.99	158.75	158.57	25172	2900	6840	8800	12500	106.00
0.5	312.50	158.57	59553	6500	15500	19800	28300	236.00
0.976	180.00	175.84	31651.2	2950	7000	9000	12800	165.00
0.809	221.00	178.98	39554	3550	8500	10800	15500	188.00
0.68	300.00	204.10	61230	4250	10100	12900	18000	300.00
0.958	231.00	221.30	51136	3000	7200	9000	13000	238.00
0.45	495.00	221.37	109578	6450	15000	19500	28000	513.00
0.806	290.00	233.00	67839	3116	7790	9000	15580	325.00
0.471	500.00	235.50	117750	6100	14600	18600	26600	560.00
0.699	352.00	246.00	86887	3750	9000	10000	18000	417.00
0.524	470.00	246.00	115850	5000	12000	14000	24000	556.00
0.977	270.00	263.76	71215	2950	7000	9000	12500	336.00
0.708	370.00	262.00	97010	3600	8800	10000	17600	465.00
0.225	1280.00	289.00	369766	11500	27500	34000	55000	1770.00
0.843	432.00	364.00	157351	3000	7500	9000	15000	755.00
0.429	750.00	321.00	241387	6000	14700	18000	29400	1150.00
0.755	540.00	408.00	220428	3400	8300	10000	16600	1058.00
0.22	1665.00	367.00	611687	11700	28000	34000	56000	2930.00