

Micro Switch

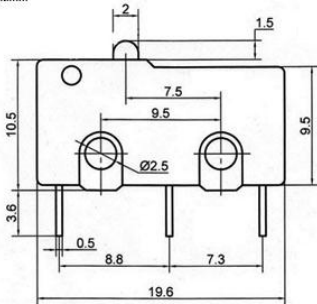
Q-9376

TYPE: **KW4-4**

SPECIFICATIONS

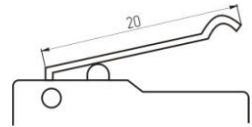
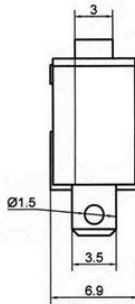
Contact Type	SPDT
Rating	AC 250V, 3A
Contacts Resistance	20mΩ Max
Insulation Resistance	100MΩ Min
Minimum Load	DC 100V
Dielectric Strengths	AC 1500V / 1 minute
Life Test	50 000 cycles/ minute
Operating temperature range	-25°C to +120°C

Unit:mm

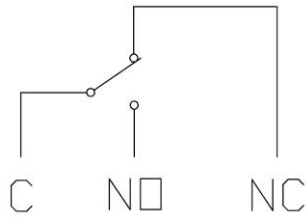


Mounting

Outline Drawing



Circuitry



ON - (ON)