

# Slide Switch

**Q-2943**

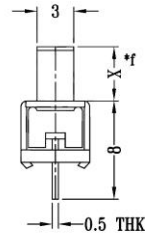
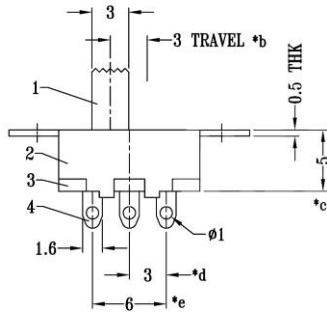
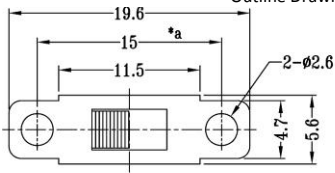
TYPE: **SS-12F31**



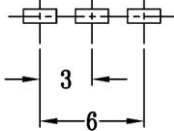
## SPECIFICATIONS

|                       |                       |
|-----------------------|-----------------------|
| Contact Type          | SPDT                  |
| Pin Width             | 3 mm                  |
| Rating                | DC 30V, 0.3A          |
| Contacts Resistance   | 10mΩ                  |
| Insulation Resistance | 1000MΩ                |
| Minimum Load          | DC 500V               |
| Dielectric Strengths  | AC 1000V / 1 minute   |
| Life Test             | 10 000 cycles/ minute |
| Material              | Plastic & Metal       |

Outline Drawing



Mounting



Circuitry

