

| REV. | DESCRIPTION | DRAWN | CHECKED | APPROVED |
|------|-------------|--------------|---------|----------|
| A | NEW RELEASE | JLH 12/03/05 | | |
| | | | | |
| | | | | |

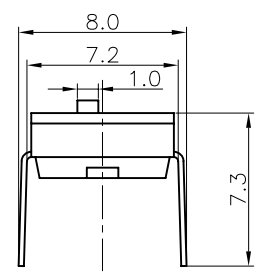
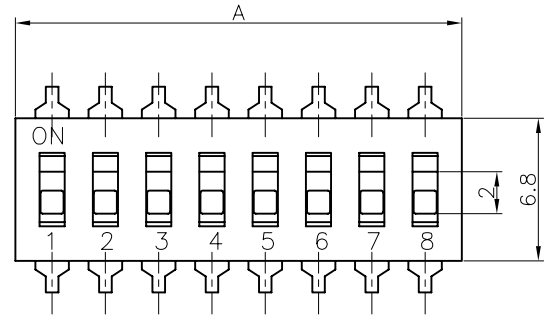
NOTES:

- Contact resistance: 30mΩ max.
- Dielectric withstanding voltage: 250 VAC 1minute.
- Insulation resistance: 1000 MΩ min.
- Temperature range: -20°C ~ +70°C.
- Product number code:

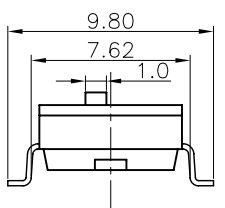
DS1040-01 - X X X X X

- Packing type
B: tube A: polybag
T: tray R: tape & reel
- Acuator color
W: White Y: yellow R: red
B: Black
- Housing color
W: White Y: yellow R: red
B: Black
- Mounting type
S: SMT type
V: V/T type
- No. of contacts
2 3 4 5 6 7 8 9 10

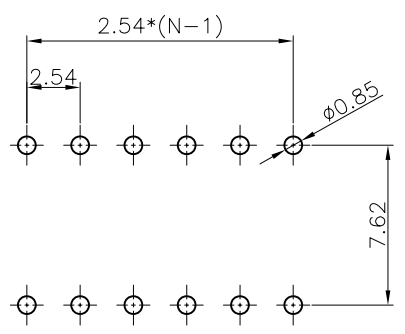
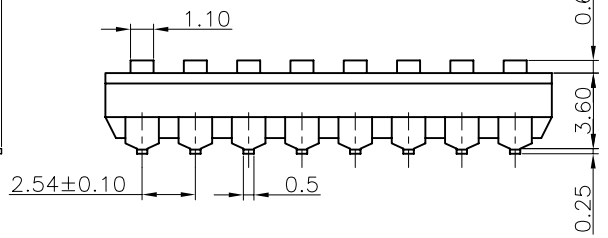
| Positions | DIM.A |
|-----------|-------|
| 2 | 6.04 |
| 3 | 8.58 |
| 4 | 11.12 |
| 5 | 13.60 |
| 6 | 16.20 |
| 7 | 18.74 |
| 8 | 21.28 |
| 9 | 23.82 |
| 10 | 26.36 |



V/T TYPE

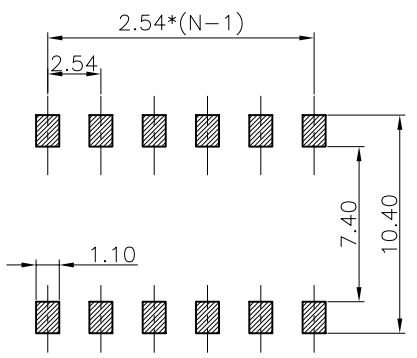


SMT TYPE



V/T TYPE

RECOMMEND P.C.B LAYOUT
Tolerance±0.05
N: Number of contacts/2



SMT TYPE

| | | | | | | | | |
|-------------------|-------|-------------------|-------|---------------|----|--------|------------------------------|--|
| GENERAL TOLERANCE | | ANGLE TOLERANCE | | PROJECTION | | TITLE | SWITCH PITCH 2.54mm SMT TYPE | |
| X. | ±0.60 | X. | ±5° | UNITS | mm | | | |
| .X | ±0.38 | .X | ±3° | SHEET SIZE | A4 | SERIES | DS1040-01 | |
| .XX | ±0.25 | .XX | ±2° | SWD (1040-01) | | | | |
| DRAWING TYPE | | CUSTOMER | | | | | | |
| SCALE | | 1:1 | SHEET | 1 OF 1 | | | | |
| DRAWING NO. | | C-DS1040-01-XXXXX | | | | | | |