

Low Torque Switch

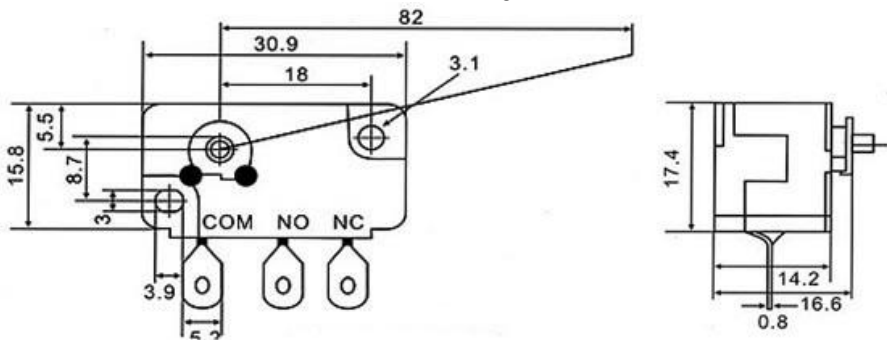
Q-1727

TYPE: **P-CS-71**

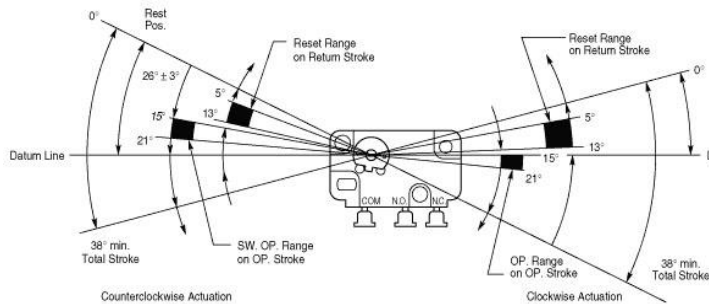
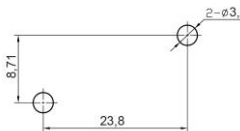
SPECIFICATIONS

Rating: 5A 250V AC
Contact R: 15mΩ max
Insulation R: 500V DC 100MΩ min
Dielectric Strength: 1 Minute 1000V AC
Operating Temperature: -40°C ~ +85°C
Electrical Life: 6,000 Cycles
L, mm: 80

Outline Drawing



Mounting



Rest from Centerline 26° ± 3°. Full Overtravel 38° minimum.