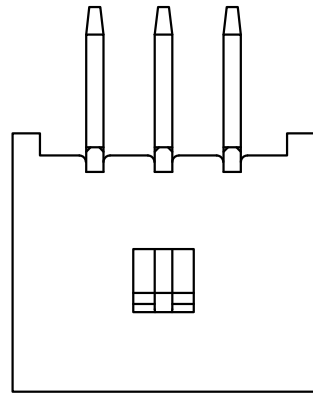
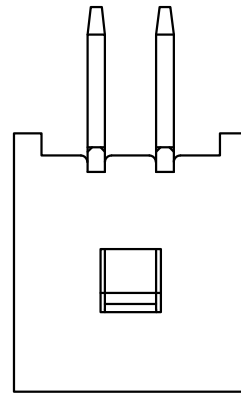


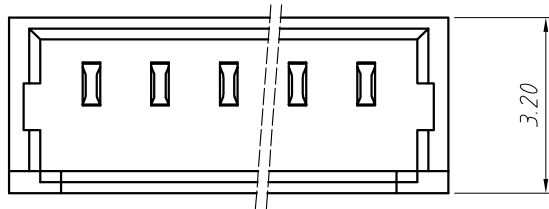
4P-25P



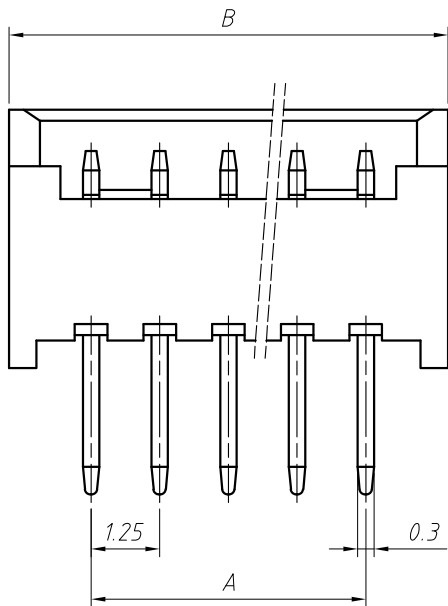
3P



2P



3.20

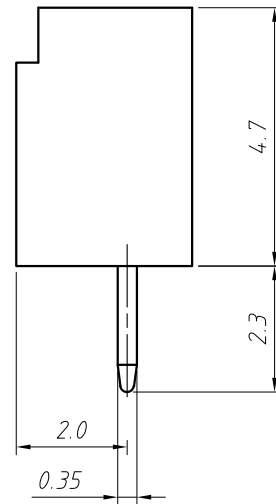


B

A

1.25

0.3

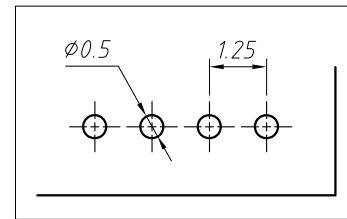
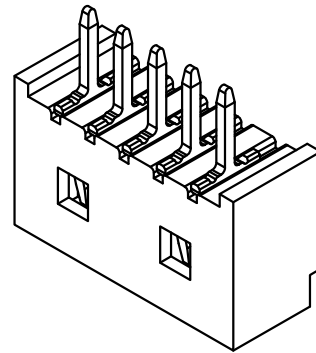


4.7

2.3

2.0

0.35



∅0.5

1.25

PCB LAYOUT

Circuit	Dimensions(mm)	
	A	B
02	1.25	4.25
03	2.50	5.50
04	3.75	6.75
05	5.00	8.00
06	6.25	9.25
07	7.50	10.50
08	8.75	11.75
09	10.00	13.00
10	11.25	14.25
11	12.50	15.50
12	13.75	16.75
13	15.00	18.00
14	16.25	19.25
15	17.50	20.50
16	18.75	21.75
--	---	---
25	30.00	33.00

Material:

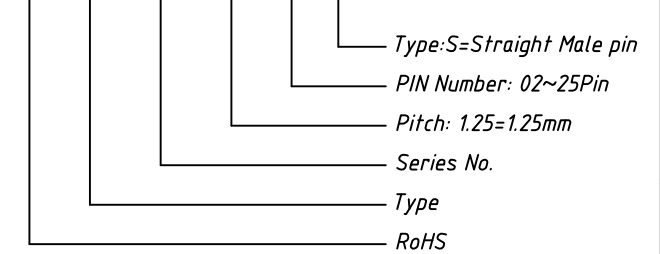
Housing:PA66(UL94V-0/V-2),White
Contacts:Phosphor Bronze,Tin Plated

Electrical Characteristics:

- 1.Poles: 2 to 25P
- 2.Current rating: 1.0A
- 3.Voltage rating: 125V
- 4.Temperature range: -25°C to +85°C
- 5.Contact resistance: ≤20mΩ
- 6.Insulation resistance: ≥100MΩ
- 7.Withstand voltage: 500V AC/minute
- 8.Applicable wire: AWG #32 to #28
- 9.Applicable PC board thickness: 0.8mm

Order Information

L-KLS1-XL1-1.25-XX-S



GENERAL TOLERANCE	PROJECTION		Description:
X. ±0.50	UNITS	mm	1.25mm ZH Type Wire To Board Connector
.X ±0.25	SCALE	1:1	
.XX ±0.10	Draw by:	Jenny	
ANGLE TOLERANCE	Check by:		KLS P/N: L-KLS1-XL1-1.25-XX-S
X. ±5°	Date	2018-03-01	NingBo KLS ELECTRONIC CO.,L TD.
.X ±3°	SHEET	1 OF 1	
.XX ±2°			