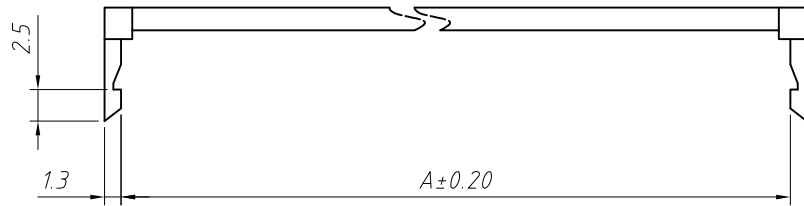
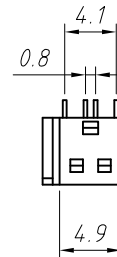
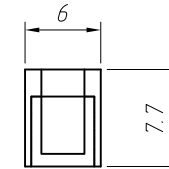
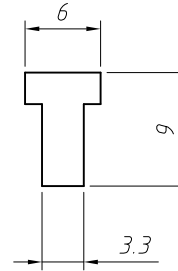
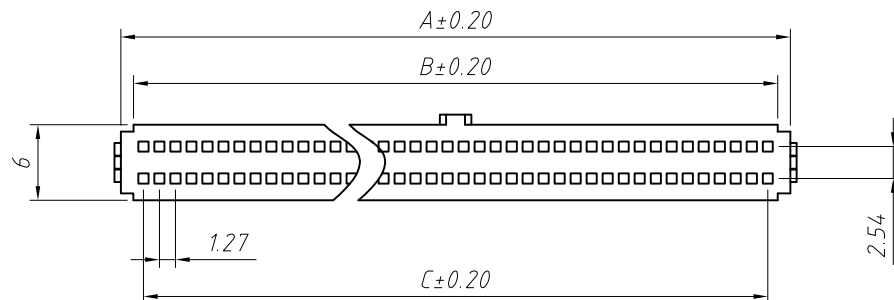
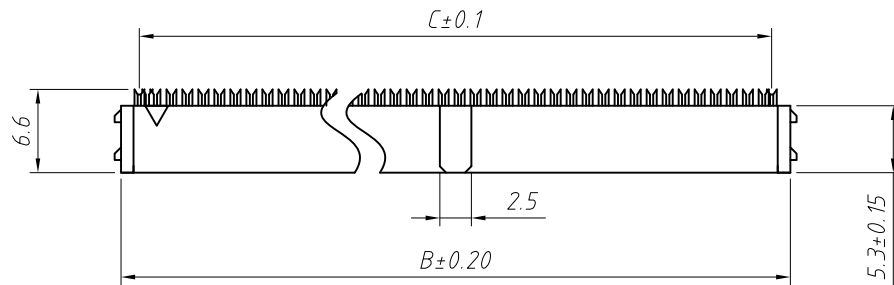
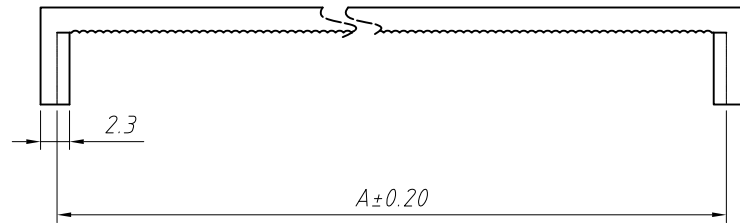


RoHS Compliance



Strain Relieve



Order Information:

L-KLS1-204D-XX-B

L: RoHS
 IDC connectors
 1.27x2.54mm Pitch
 XX-No. of 10~100pin
 Color: B=Black G=Gray L=Blue

Material:
 Housing: PBT,UL 94V-0
 Contacts: Phosphor Bronze
 Plating: Au or Sn over 50u" nickel

Electrical Characteristics:
 Current Rating: 1.0 AMP
 Withstand Voltage: 500V AC
 Insulator Resistance: 1000M Ohm min
 Contact Resistance: 30m Ohm max.
 Operating Temperature: -40°C ~ +105°C
 Max. Processing Temp: 180°C for 30-60 seconds
 (200°C for 10 seconds)

Pin	Dimension mm		
	A	B	C
10	11.25	8.35	5.08
14	13.79	10.89	7.62
16	15.06	12.16	8.89
20	17.60	14.70	11.43
22	18.87	15.97	12.70
26	21.41	18.51	15.24
30	23.95	21.05	17.78
34	26.49	23.59	20.32
40	30.30	27.40	24.13
44	32.84	29.94	26.67
50	36.65	33.75	30.48
60	43.00	40.10	36.83
68	48.08	45.18	41.91
80	55.70	52.80	49.53
100	68.40	65.50	62.23

ANGLE TOLERANCE	PROJECTION	Description:	
±3°		1.27x2.54mm Pitch IDC Socket Connector	
GENERAL TOLERANCE	UNITS	mm	KLS P/N:
x.x ±0.30	SHEET SIZE	A4	L-KLS1-204D-XX-B
x.xx ±0.20	Draw:	Daniel	2018-07-10
x.xxx ±0.10	Check:	Daniel	2018-07-10



NingBo KLS ELECTRONIC CO.,L TD.